

## Traveler Information Collaboration-Phase I

### Introduction

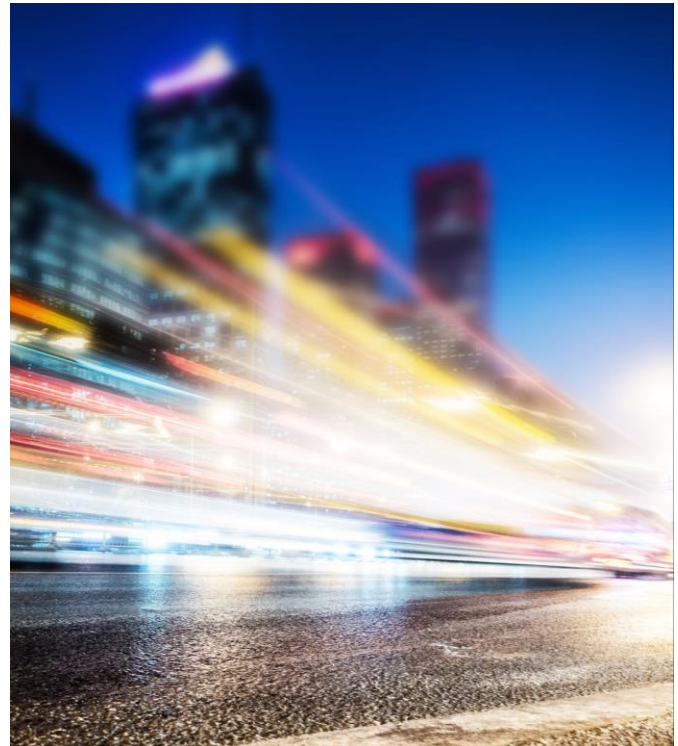
Traveler information has long been a management and operations strategy for transportation agencies. Used to inform travelers of events that may impact their trips, traveler information services have evolved considerably since the [national designation of 511](#) in 2000.

The ENTERPRISE pooled fund program is a leader in the research, development and application of Intelligent Transportation Systems (ITS) innovations to advance transportation system management and operations. ENTERPRISE initiated this project to review the current state of traveler information practice for reporting road weather events and to explore the possibility of creating a community of practice and providing guidance on future practices. This project builds off recent work completed by ENTERPRISE that researched how agencies are automating the process of reporting winter road weather conditions. It will also revisit previous work on the next era of traveler information.

Potential additional phases of work could include a scan of practices for other traffic and travel conditions described in [23 CFR 511 Real-Time System Management Information Program](#), and exploration of traveler preferences, automation, and industry offerings.

### Project Contacts

- Champion: Sinclair Stolle, Iowa DOT, [sinclair.stolle@iowadot.us](mailto:sinclair.stolle@iowadot.us)
- Technical Support: Ginny Crowson, Athey Creek Consultants, [crowson@acconsultants.org](mailto:crowson@acconsultants.org)



### Project Overview

Research will be conducted to review recent traveler information related work and establish a reference point for how such work may be influencing practices around reporting road weather events. Using that reference point, interviews will be conducted with ENTERPRISE member states and others to gather information from a geographic cross section and variety of vendor and in-house traveler information systems.

Traveler information representatives from each state will be invited to participate in a virtual workshop that will feature results of the current practice research and discuss future phases of potential work. Workshop participation will inform the level of interest in continuing a community of practice and additional phases of research.