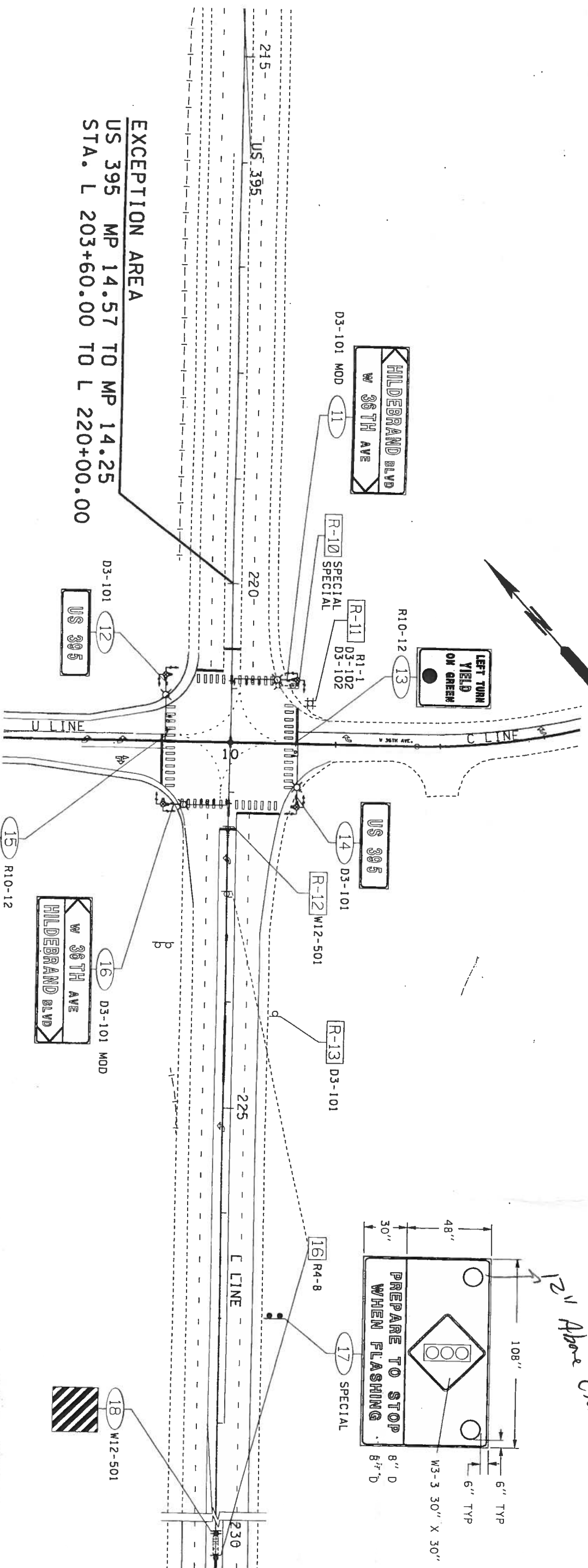


T. 8N. R. 29E. W.M.



EXCEPTION AREA
 US 395 MP 14.57 TO MP 14.25
 STA. L 203+60.00 TO L 220+00.00

SIGN LEGEND

- R- [] SIGN REMOVAL SPECIFICATION NO.
- [] NEW SIGN SPECIFICATION NO.
- [] OLD LOCATION
- [] SIGN RELOCATION SPECIFICATION NO.
- [] NEW LOCATION
- ◆ NEW SIGN INSTALLATION
- EXISTING SIGN



FILE NAME		T:\CADD\SIGNALS\SR395\27TH\SIGNING\27TH SIGNING.dgn	
TIME	11:47:45 AM	REGION NO.	10
DATE	5/17/2006	STATE	WASH
DESIGNED BY	herfc	FED. AID PROJ. NO.	
ENTERED BY	C. HERT	JOB NUMBER	
CHECKED BY	D. ELDRED	CONTRACT NO.	
PROJ. ENGR.	R. GIFFORD	LOCATION NO.	
REGIONAL ADM.	D. WHITEHOUSE	DATE	
REVISION	BY	DATE	

P.E. STAMP BOX		DATE
P.E. STAMP BOX		DATE

Washington State Department of Transportation	
US 395 W. 27TH AVE. AND W. 36TH AVE. IS	PERMANENT SIGNING PLAN

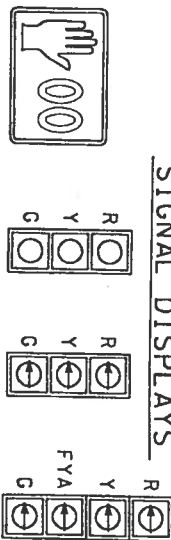
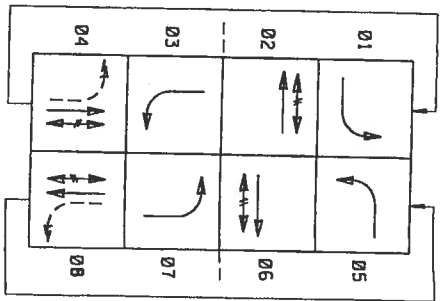
PL0114	S4
SHEET 56 OF 62	SHEETS

CONSTRUCTION NOTES:

- ① CONSTRUCT FOUNDATION AND INSTALL TYPE 111 SIGNAL STANDBY, PEDESTRIAN SIGNAL HEADS AND PUSHBUTTON ASSEMBLIES PER SIGNAL STANDARD DETAIL CHART.
- ② REMOVE SERVICE CABINET AND ALL ASSOCIATED HARDWARE. ABANDON CONDUIT. COORDINATE POWER DISCONNECT WITH THE UTILITY COMPANY THROUGH THE ENGINEER.
- ③ CONSTRUCT FOUNDATION AND INSTALL RELOCATED THE 332 CONTROLLER CABINET AND NEW CONTROLLER. WITH THE FRONT DOOR OPENING TO THE NORTHEAST. INSTALL NEW STRUT MOUNT TYPE B MODIFIED SERVICE. SEE SHEET TS3.
- ④ RELOCATE EXISTING LIGHT STANDARD AND SLIP BASE TO A NEW FOUNDATION PER SCHEDULE. REMOVE OLD FOUNDATION ENTIRELY.
- ⑤ INSTALL 6' X 30" MODIFIED TYPE 1 INDUCTION LOOP. SEE SHEET TS10.
- ⑥ INSTALL 6' X 50" MODIFIED TYPE 1 INDUCTION LOOP. SEE SHEET TS10.
- ⑦ INSTALL 6' X 6" MODIFIED TYPE 2 INDUCTION LOOP. SEE SHEET TS10.
- ⑧ ROUTE CONDUIT TO UTILITY POLE AND INSTALL LARGE RADIUS SWEEP PER UTILITY COMPANY'S REQUIREMENTS. COLL 50' OF CONDUITORS AT THE BASE OF THE POLE FOR FUTURE CONNECTION. COORDINATE POWER CONNECTION WITH THE UTILITY COMPANY THROUGH THE ENGINEER.
- ⑨ INSTALL CONDUIT UNDER ROADWAY BY JACKING OR DRILLING METHOD.
- ⑩ INTERCEPT EXISTING CONDUIT AND ROUTE TO UTILITY POLE.
- ⑪ INSTALL VIDEO DETECTION CAMERA ON 6' MAST. TERMINATE CAMERA CABLES. ADJUST CAMERA TO PROVIDE DETECTION ZONES AS SHOWN.
- ⑫ REMOVE JUNCTION BOX AND ABANDON CONDUIT.

PREEMPTION SCHEDULE

CIRCUIT(PHASE(S))	PHASE(S)
A	2&5
B	4&7
C	6&1
D	8&3



- 1 ALL VEHICLE DISPLAYS SHALL BE THE LED TYPE WITH 12" LENS.
- 2 ALL VEHICLE HEADS SHALL BE INSTALLED ON TYPE "N" MOUNTS.
- 3 ALL PEDESTRIAN DISPLAYS SHALL BE LED HAND OVER MAN TYPE WITH COUNTDOWN TIMER. ALL HEADS SHALL HAVE TYPE "E" MOUNTS.
- 4 ALL VEHICLE HEADS SHALL HAVE LIVERED ALUMINUM BACKPLATES WITH BLACK ANODIZED FINISH. ALL SCREWS AND WASHERS SHALL BE STAINLESS STEEL.

BREAKER SCHEDULE

CIRCUIT	DESCRIPTION	BREAKER RATING	CONTACTOR RATING	VOLTAGE
---	MAIN	100A	N/A	240
A	LGT A	20A	30A	240
B	LGT B	20A	30A	240
C	SIGNAL	60A	N/A	120
D	CONTROL	15A	N/A	120
E	GFR	20A	N/A	120
F	FLASHING BEACON	15A	N/A	120

SCALE IN FEET
0 20 40

36TH AVE. SIGNAL

NOTES:
FOR LEGEND SEE SHEET TS2
FOR WIRING SCHEDULE SEE SHEET TS12
FOR LUMINAIRE SCHEDULE SEE SHEET TS13

FILE NAME: T:\CADD\SIGNAL\SR395\36th\36th Signal corey design-take 3.dgn
 TIME: 11:48:36 AM
 DATE: 5/17/2006
 PLOTTED BY: herfc
 DESIGNED BY: C. HERT
 ENTERED BY: C. HERT
 CHECKED BY: J. MAHUGH
 PROJ. ENGR.: R. GIFFORD
 REGIONAL ADM.: D. WHITEHOUSE

REGION NO. 10 WASH
 STATE FED. AID PROJ. NO.
 CONTRACT NO.
 LOCATION NO.

P.E. STAMP BOX DATE

Washington State
 Department of Transportation

US 395
 W. 27TH AVE. AND
 W. 36TH AVE. VS
 TRAFFIC SIGNAL

PLOT 11
 SHEET 45 OF 62 SHEETS

MATCH LINE SHEET TS13

MATCH LINE SHEET TS12

CONSTRUCTION NOTES:

- ⑦ INSTALL 6' X 6' MODIFIED TYPE 2 INDUCTION LOOP. SEE SHEET TS10.
- ⑪ DISCONNECT EXISTING SERVICE CONDUCTORS AND TERMINATE NEW CONDUCTORS. COORDINATE POWER DISCONNECT AND CONNECTION WITH THE UTILITY COMPANY THROUGH THE ENGINEER.
- ⑫ INSTALL SIGN MOUNTED JUNCTION BOX, CABINET WITH FLASHER AND FLASHING BEACONS ON SIGN. SEE SIGNING PLANS AND STD PLAN J-12.

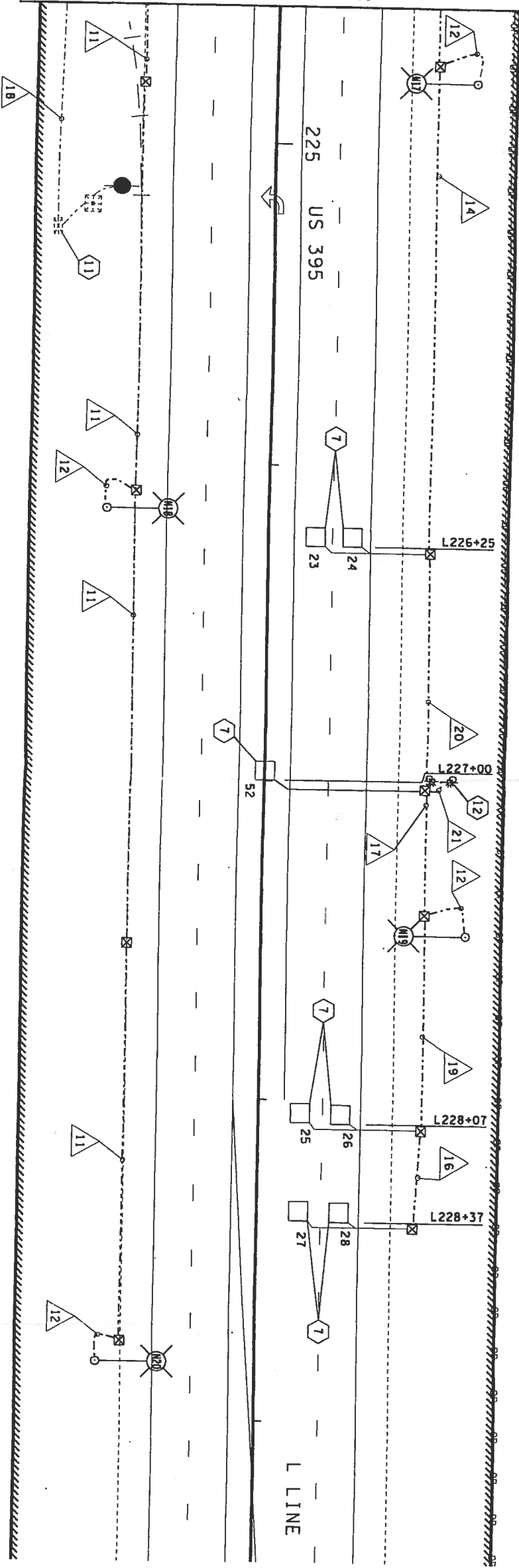
WIRING SCHEDULE

NO.	CONDUIT SIZE	EVE/3CS	LOOP CABLE/2CS	PED BUTTON/2CS	PED HEAD/5C	VEH HEAD/5C	ILLUM #8	POWER #6	POWER #2
1	2"								3
2	2"								
3	4"	4	18						
4	2"								
5	2"								
6	2"								3
7	1 1/2"		3						
8	3"	1	3	2	2	2	2		
9	2"								
10	EX 4"	2	8	4	4	4	2		
11	1 1/2"								
12	1"								
13	2"		5						

WIRING SCHEDULE (CON'T)

NO.	CONDUIT SIZE	EVE/3CS	LOOP CABLE/2CS	PED BUTTON/2CS	PED HEAD/5C	VEH HEAD/5C	ILLUM #8	POWER #6	POWER #2
14	2"								
15	2"								
16	3"								
17	3"								
18	EX 2"								3
19	2"		4						
20	2"		5				2		2
21	1"								

MATCH LINE SHEET TS11



NOTES:
FOR LEGEND SEE SHEET TS2
FOR LUMINAIRE SCHEDULE SEE SHEET TS13

36TH AVE. SIGNAL

FILE NAME	T:\CADD\SIGNAL\SR395\36th\36th Signal corey design-take 3.dgn		
DATE	11:49:00 AM	REGION NO.	10
DESIGNED BY	herfc	STATE	WASH
ENTERED BY	C. HERT	JOB NUMBER	
CHECKED BY	J. MAHUGH	CONTRACT NO.	
PROD. ENGR.	R. GIFFORD	LOCATION NO.	
REGIONAL ADM.	D. WHITEHOUSE		

FED. AID PROJ. NO.		P.E. STAMP BOX	DATE

Washington State
Department of Transportation

US 395
W. 27TH AVE. AND
W. 36TH AVE. IS
TRAFFIC SIGNAL