

Vehicles Entering When Flashing (VEWF)



*For ENTERPRISE Intersection Warning
System Project Webinar – June 23, 2011*

North Carolina Implementations

- Category 1
 - VEFW - Overhead Signs and Flashers
 - Signs and Flashers on Major Approach at Intersection
 - Actuated from Minor Approach
- Category 2
 - VEFW - Overhead Signs and Flashers
 - Signs and Flashers on Minor Approach at Intersection
 - Actuated from Major Approach
- Category 3
 - VEFW - Post Mounted Signs and Flashers
 - Signs and Flashers on Major Approach before Intersection
 - Actuated from Minor Approach

Category 1

- Site A -- Location Photos



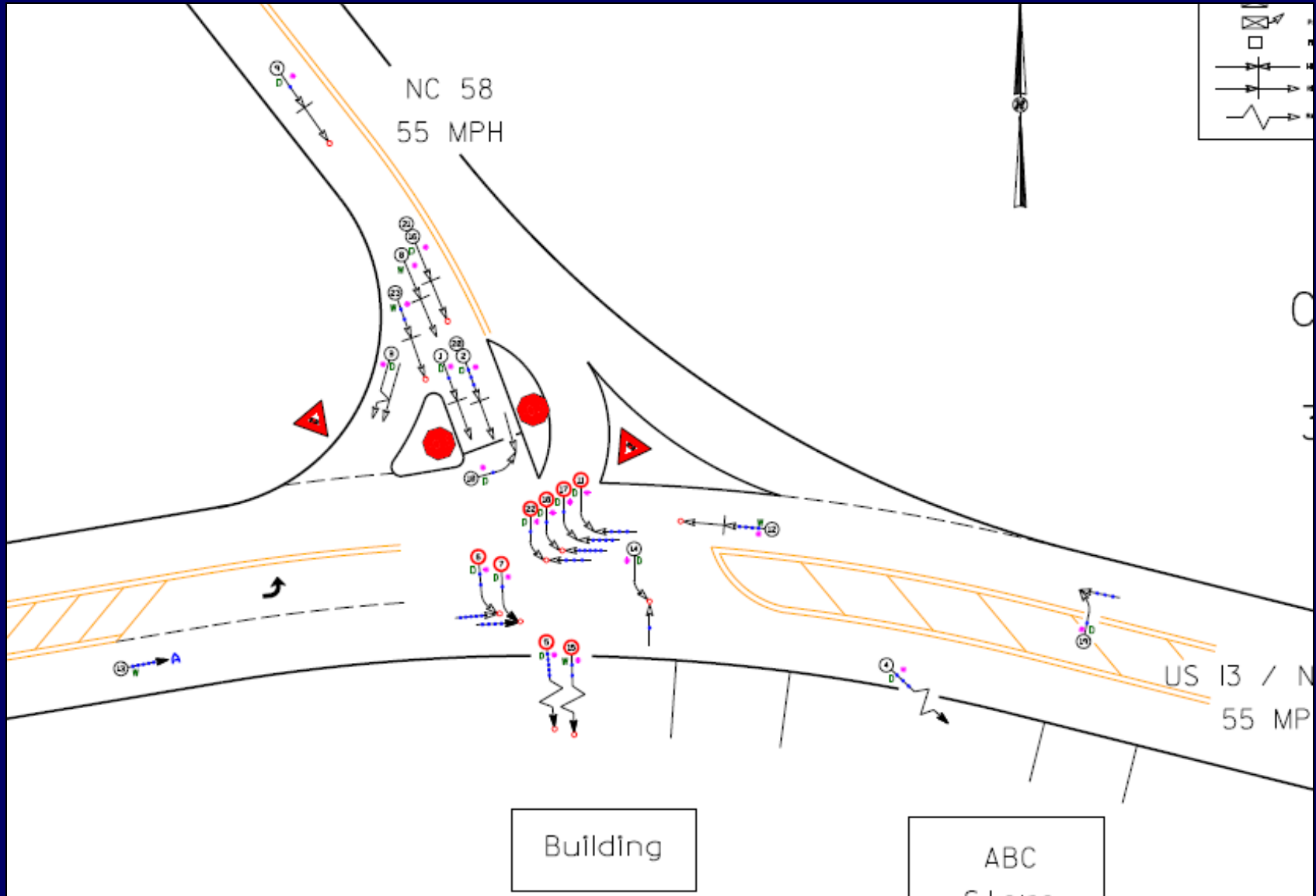
Category 1

- Site A -- Location Photos



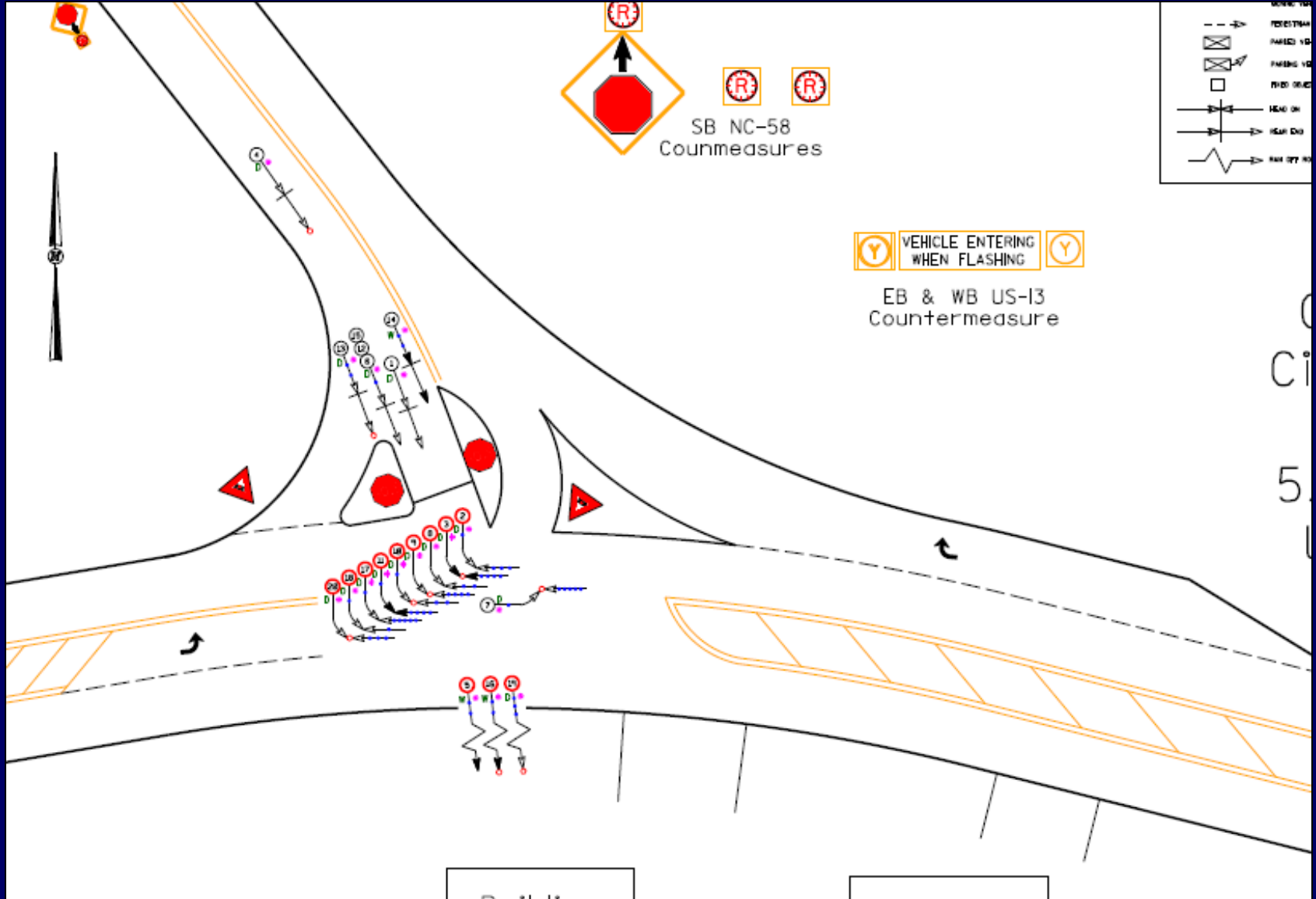
Category 1

- Site A -- Collision Diagram – Before Period (5 years)



Category 1

- Site A -- Collision Diagram – After Period (5 years)



Category 1

- Site B -- Location Photos



Category 1

- Site B -- Location Photos



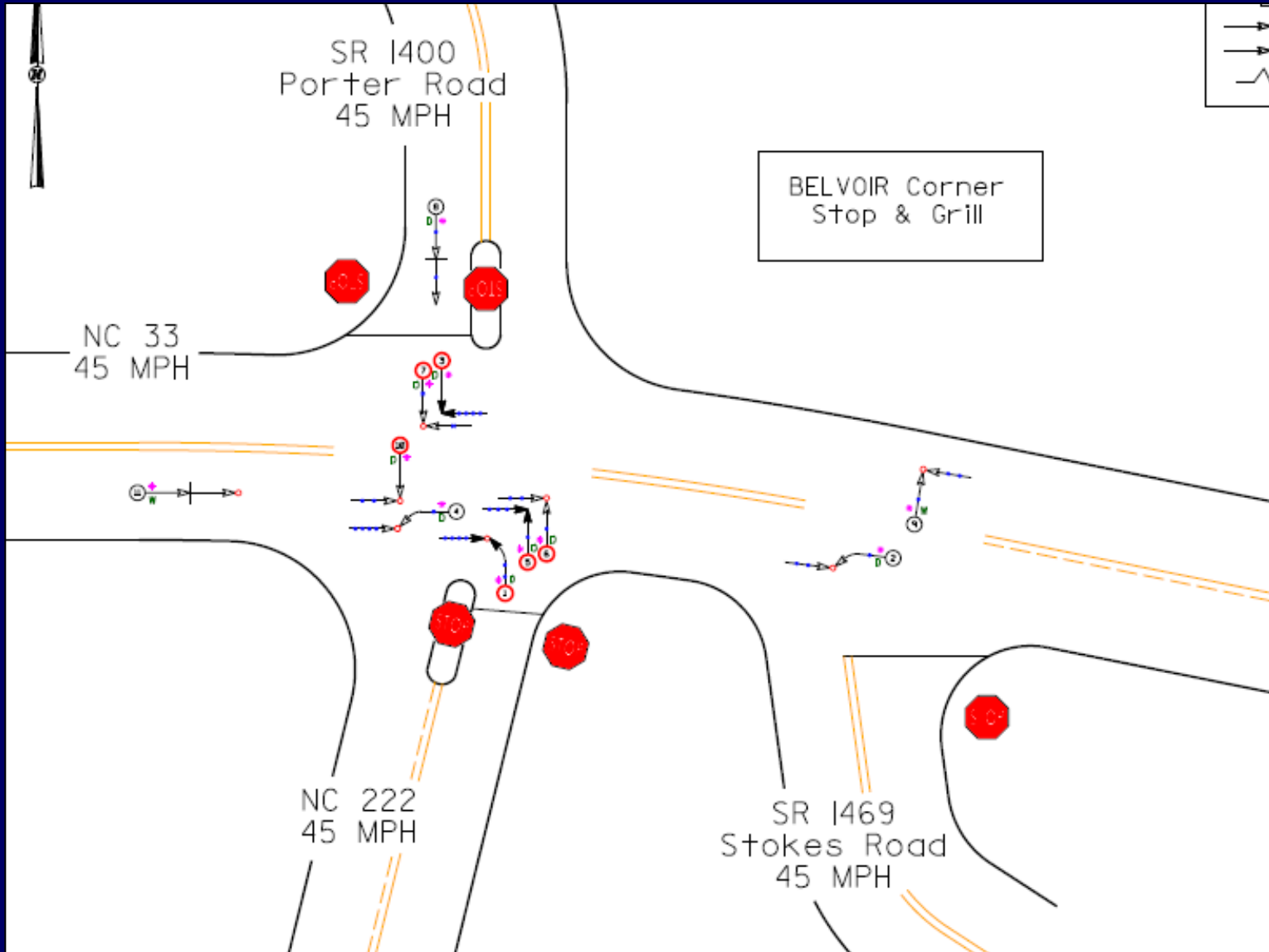
Category 1

- Site B -- Location Photos



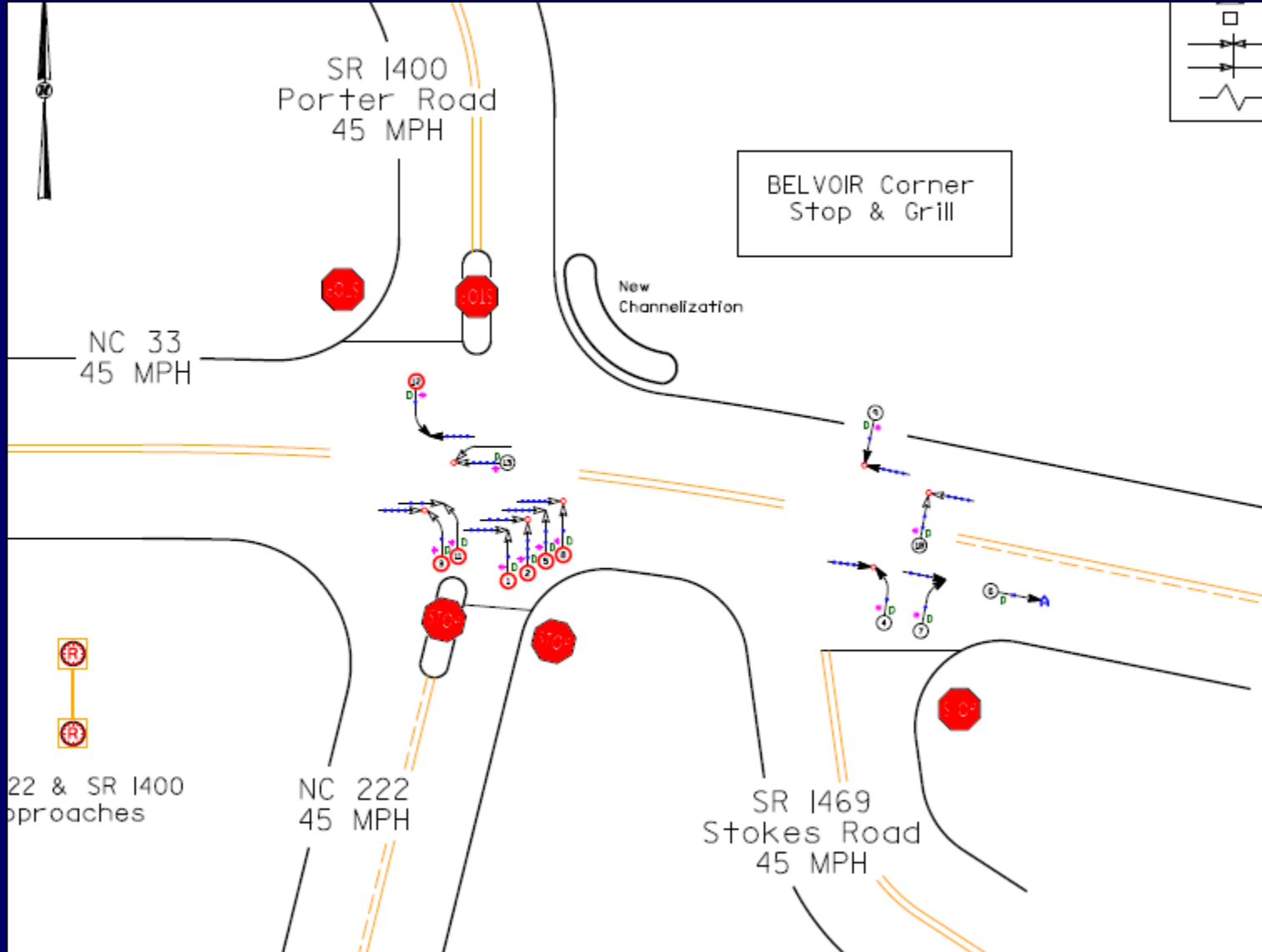
Category 1

- Site B -- Collision Diagram – Before Period (5 years, 5 months)



Category 1

- Site B -- Collision Diagram – After Period (5 years, 5 months)



Category 1

- Site C -- Location Photos



Category 1

- Site C -- Location Photos



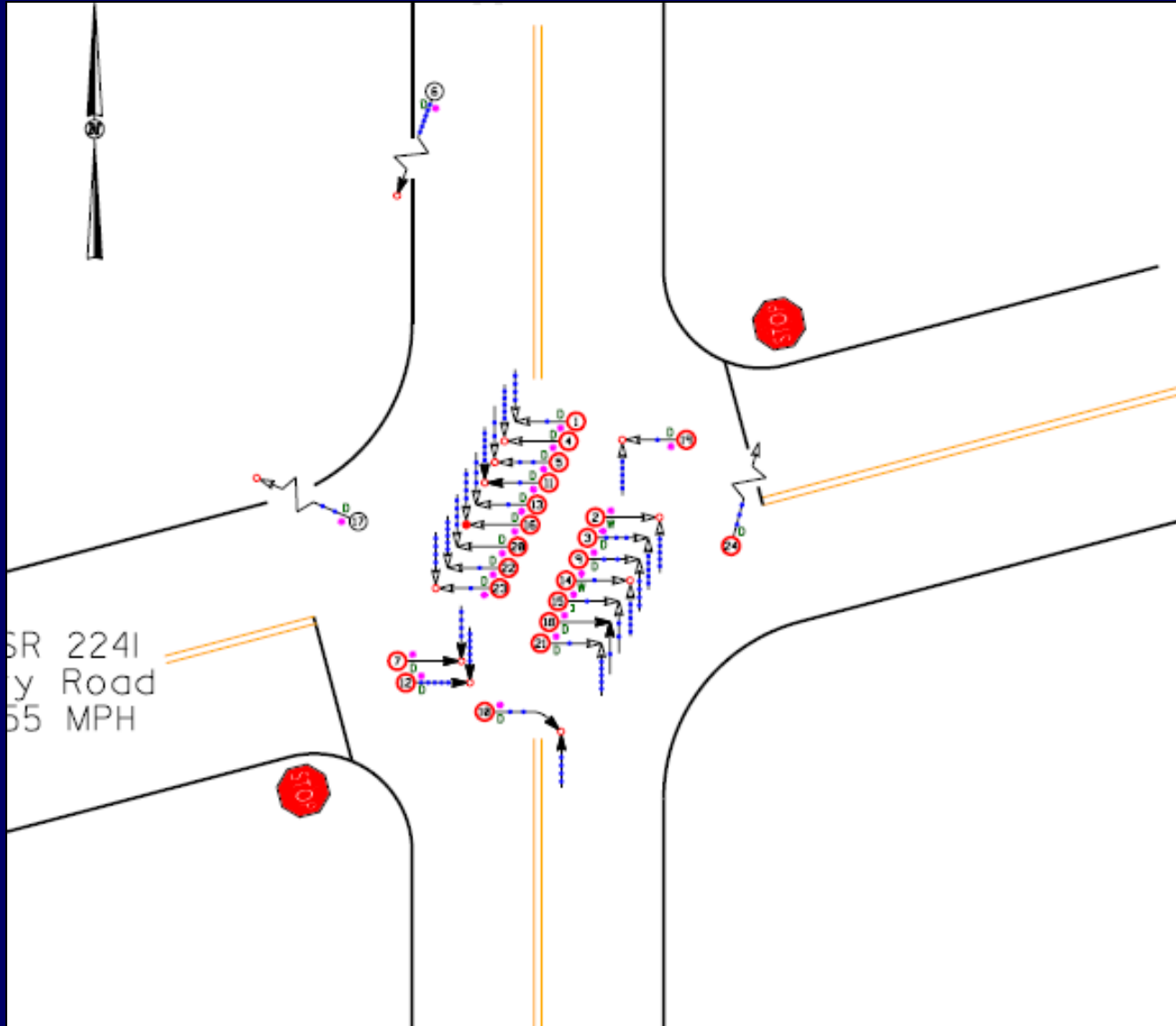
Category 1

- Site C -- Location Photos



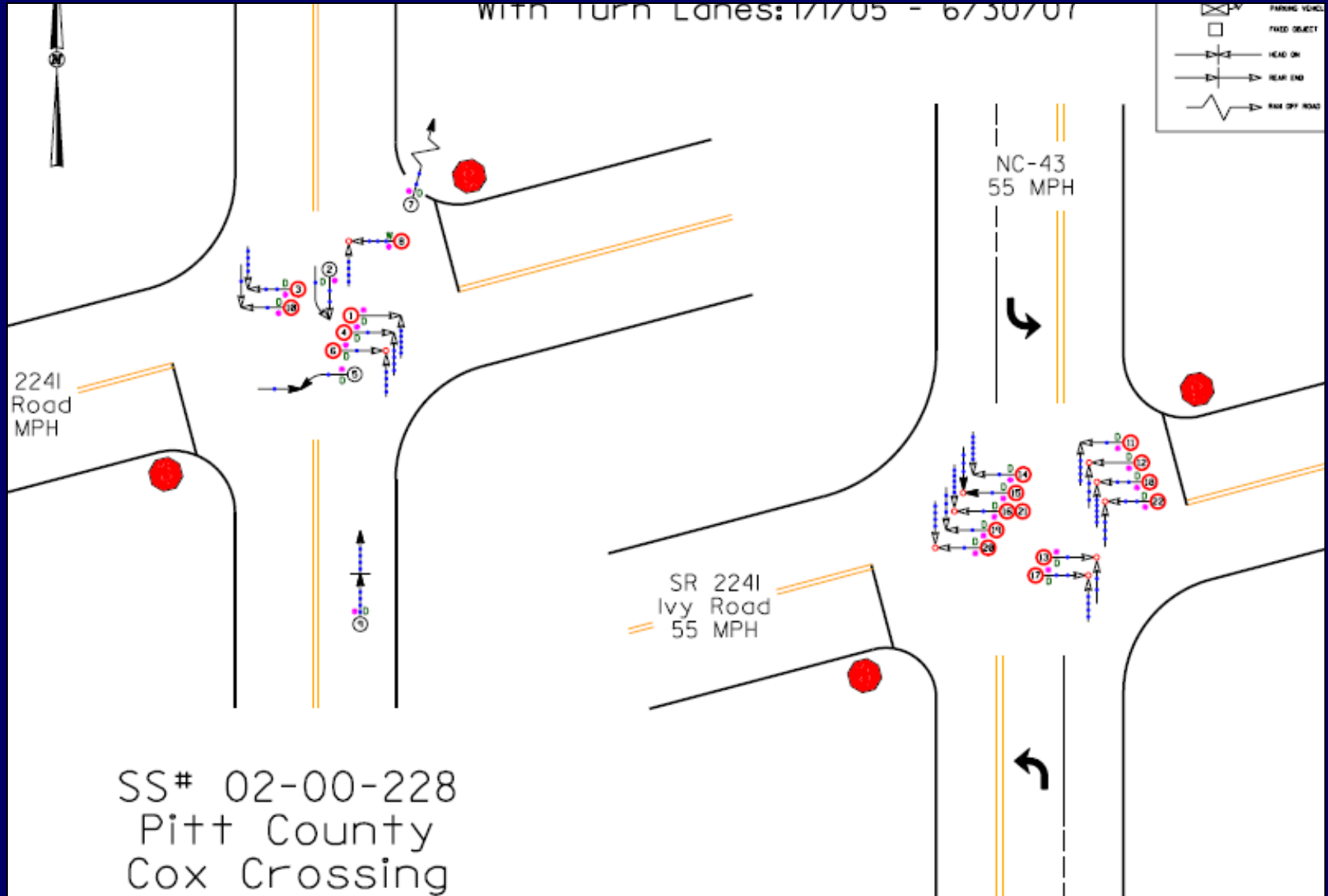
Category 1

- Site C -- Collision Diagram – Before Period (5 years)



Category 1

- Site C -- Collision Diagram – After Period (5 years)



Category 2

- Site A -- Location Photos



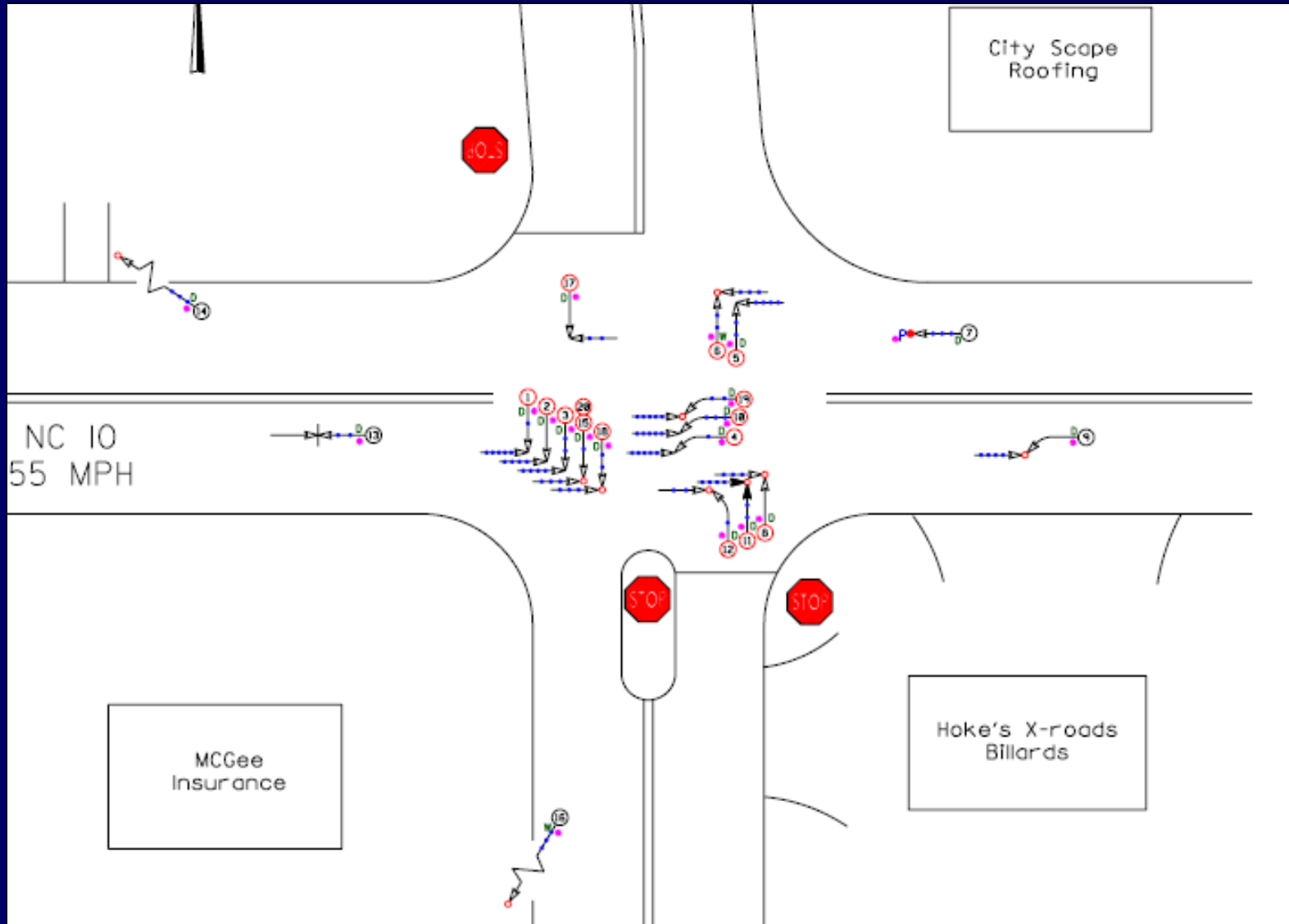
Category 2

- Site A -- Location Photos



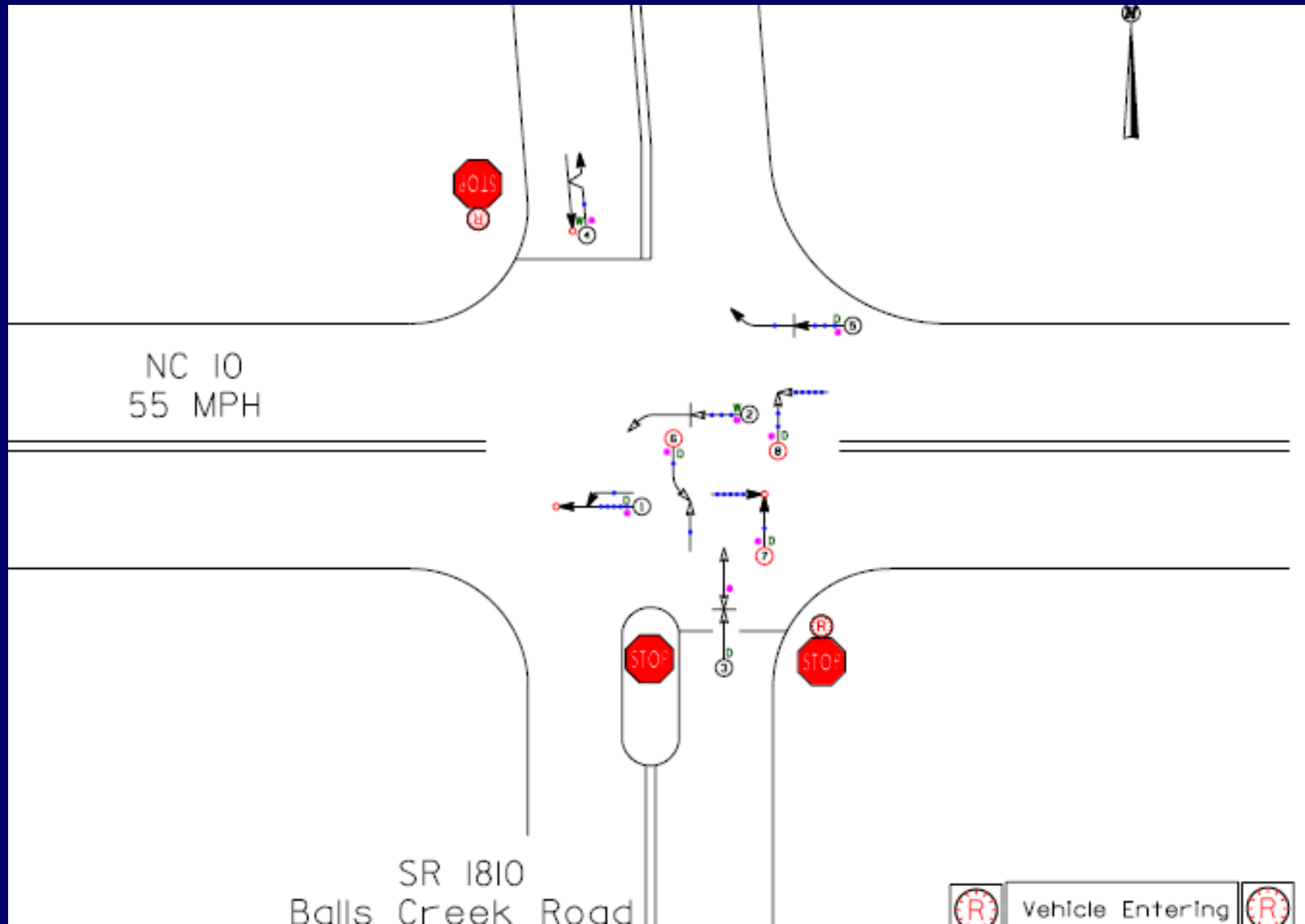
Category 2

- Site A -- Collision Diagram – Before Period (4 years, 9 months)



Category 2

- Site A -- Collision Diagram – After Period (4 years, 9 months)



Category 2

- Site B -- Location Photos



Category 2

- Site B -- Location Photos



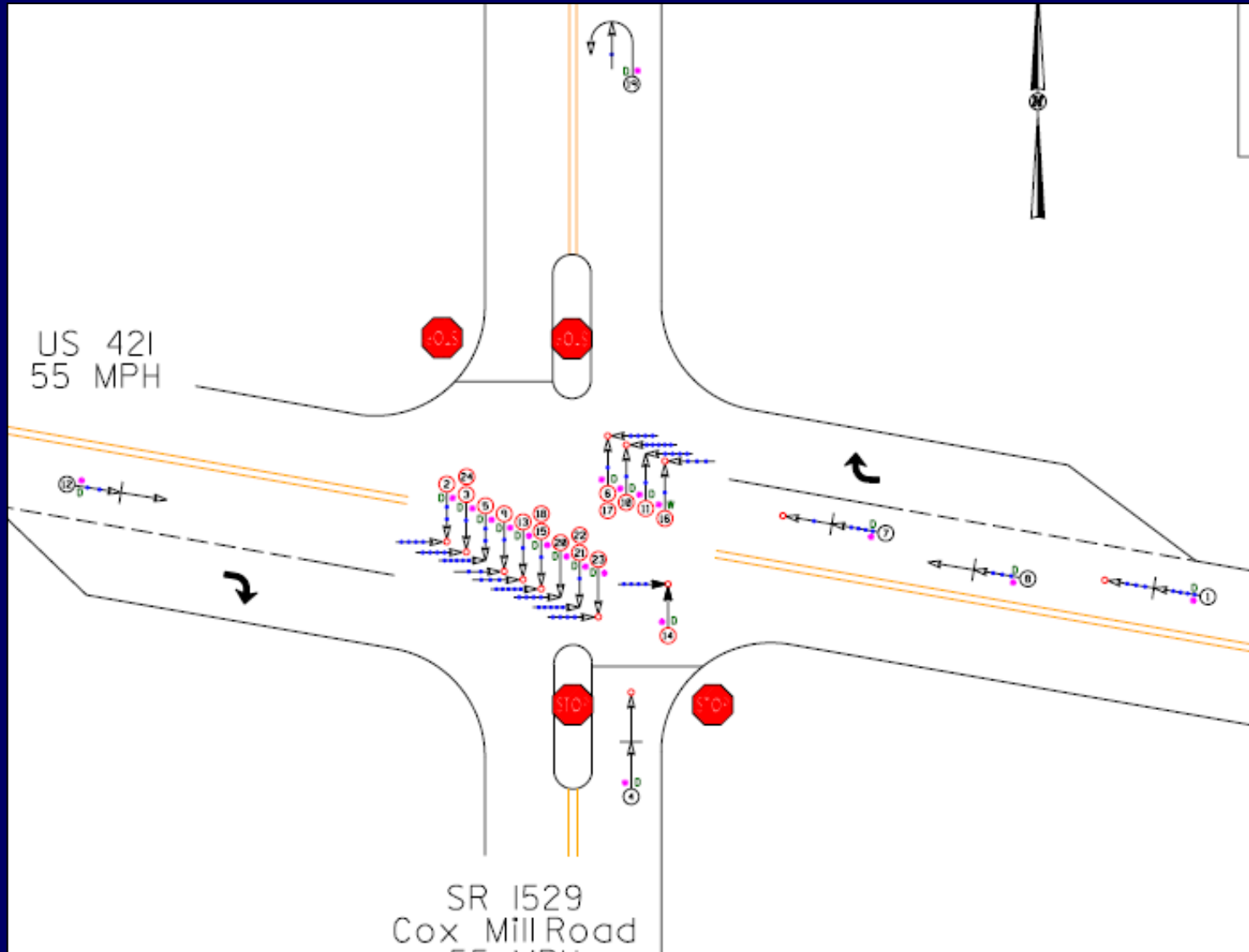
Category 2

- Site B -- Location Photos



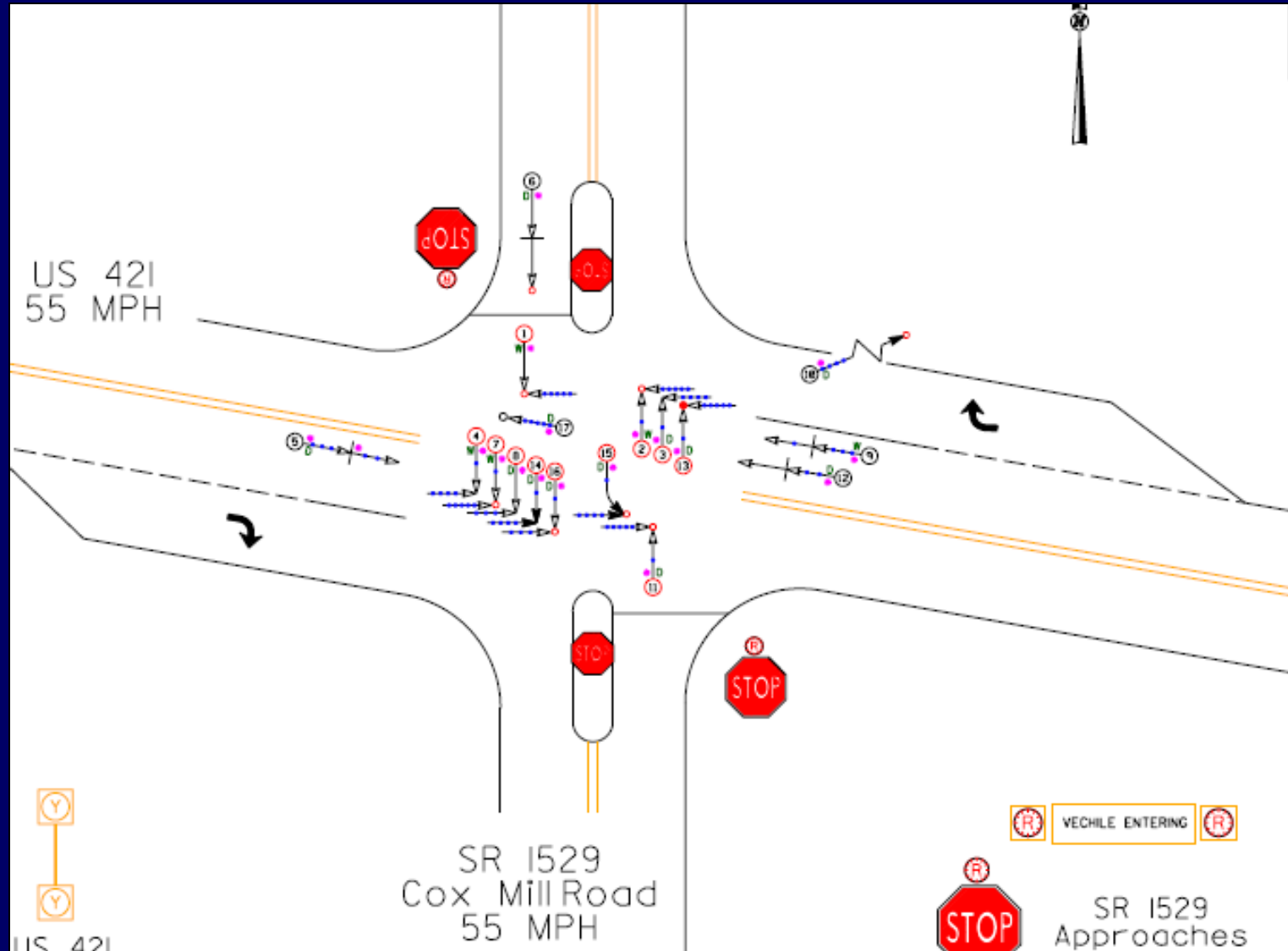
Category 2

- Site B -- Collision Diagram – Before Period (5 years, 2 months)



Category 2

- Site B -- Collision Diagram – After Period (5 years, 2 months)



Category 2

- Site C -- Location Photos



Category 2

- Site C -- Location Photos



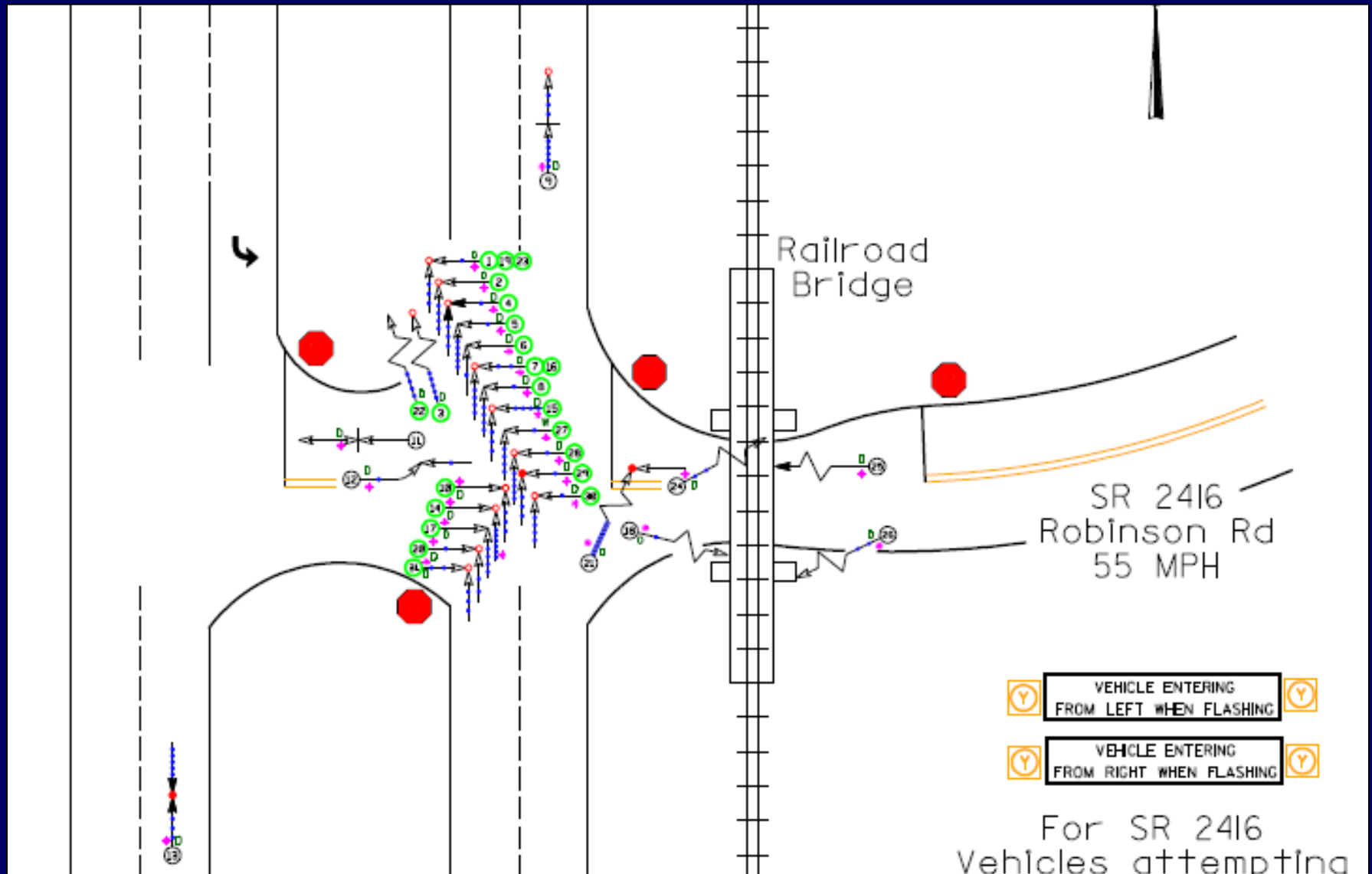
Category 2

- Site C -- Location Photos



Category 2

- Site C -- Collision Diagram – After Period (6 years, 4 months)



Category 3

- Site A -- Location Photos



Category 3

- Site A -- Location Photos



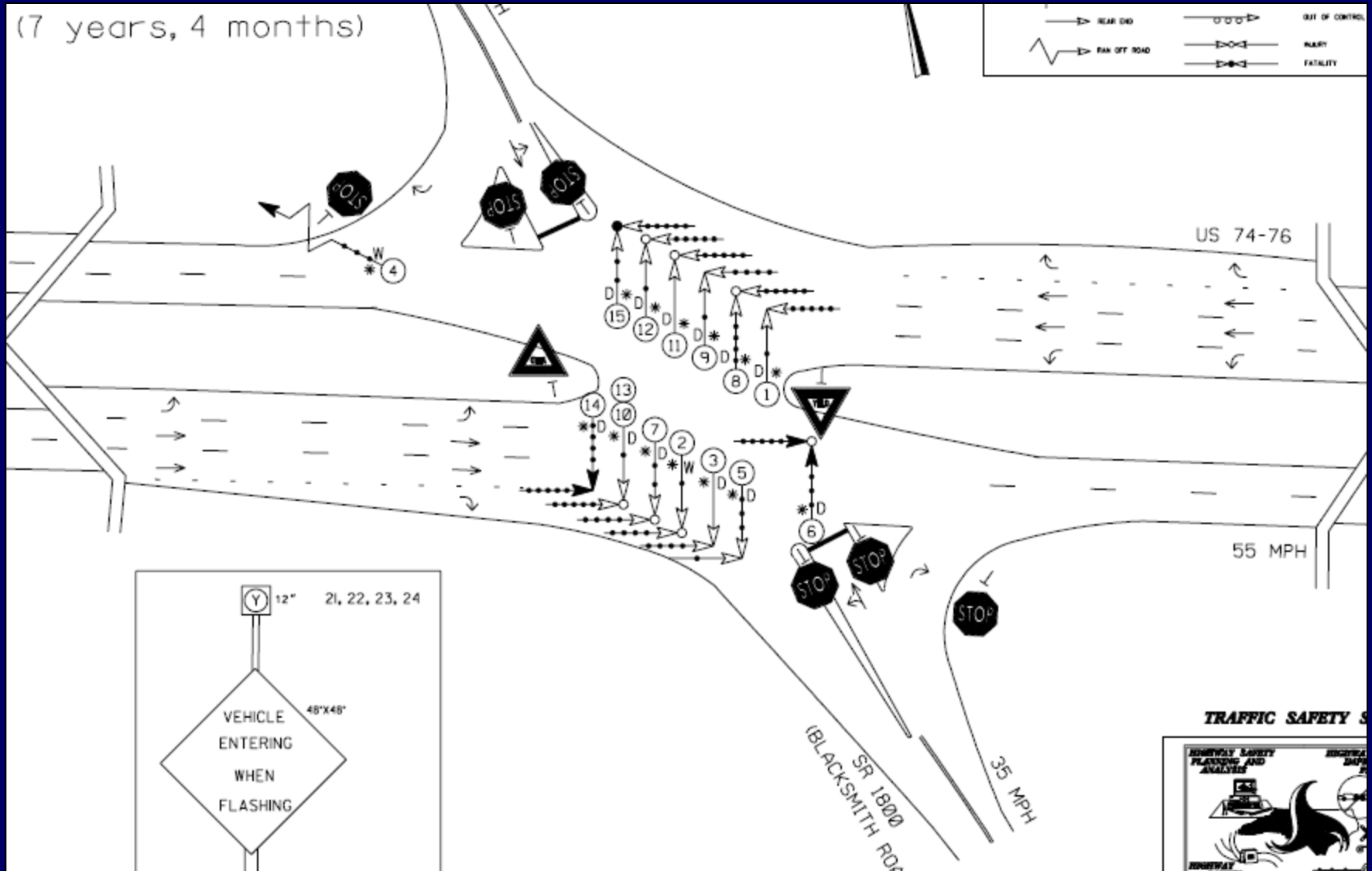
Category 3

- Site A -- Location Photos



Category 3

- Site A -- Collision Diagram – After Period (7 years, 4 months)



Category 3

- Site B -- Location Photos



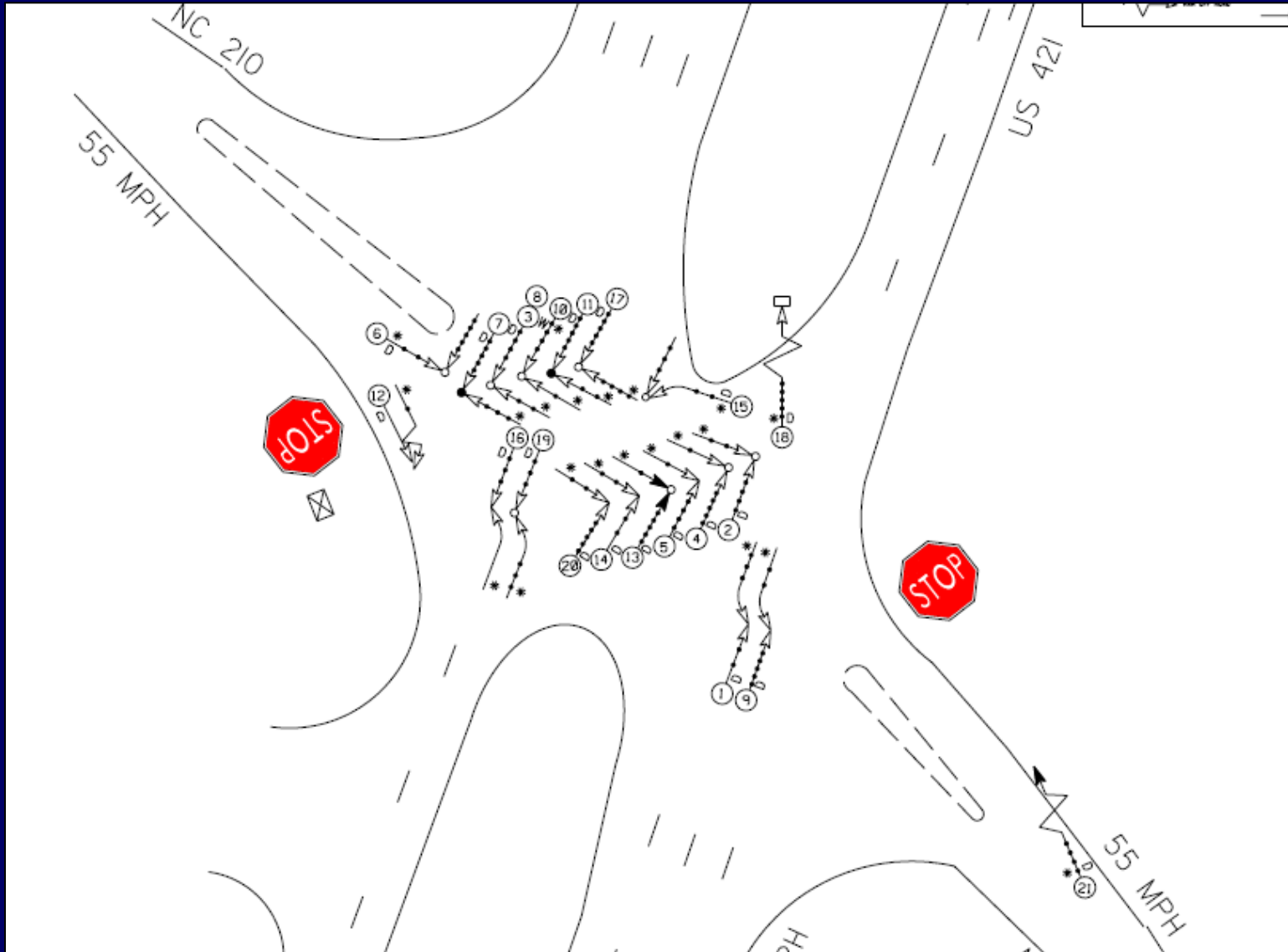
Category 3

- Site B -- Location Photos



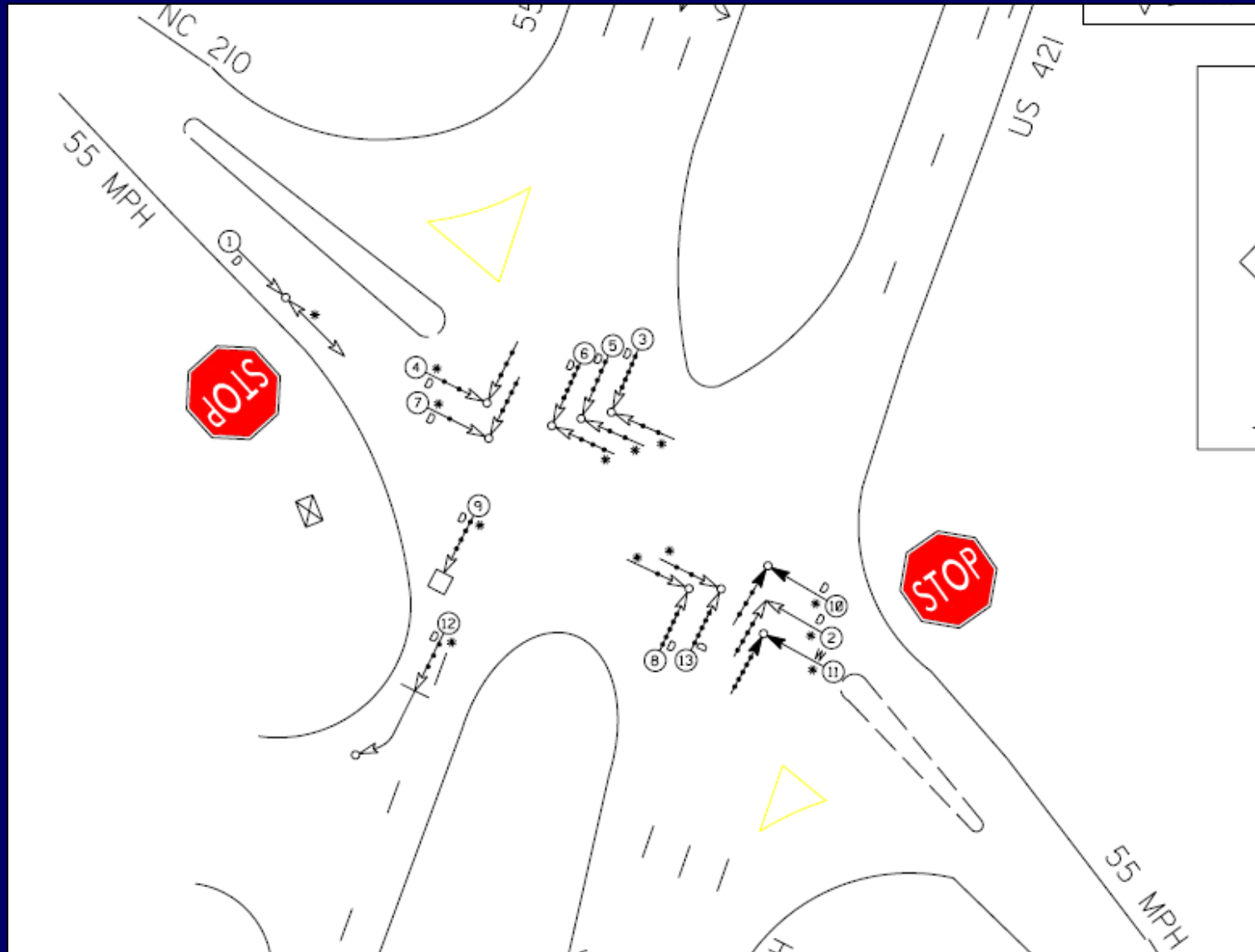
Category 3

- Site B -- Collision Diagram – Before Period (5 years, 7 months)



Category 3

- Site B -- Collision Diagram – After Period (5 years, 7 months)



Category 3

- Site C -- Location Photos



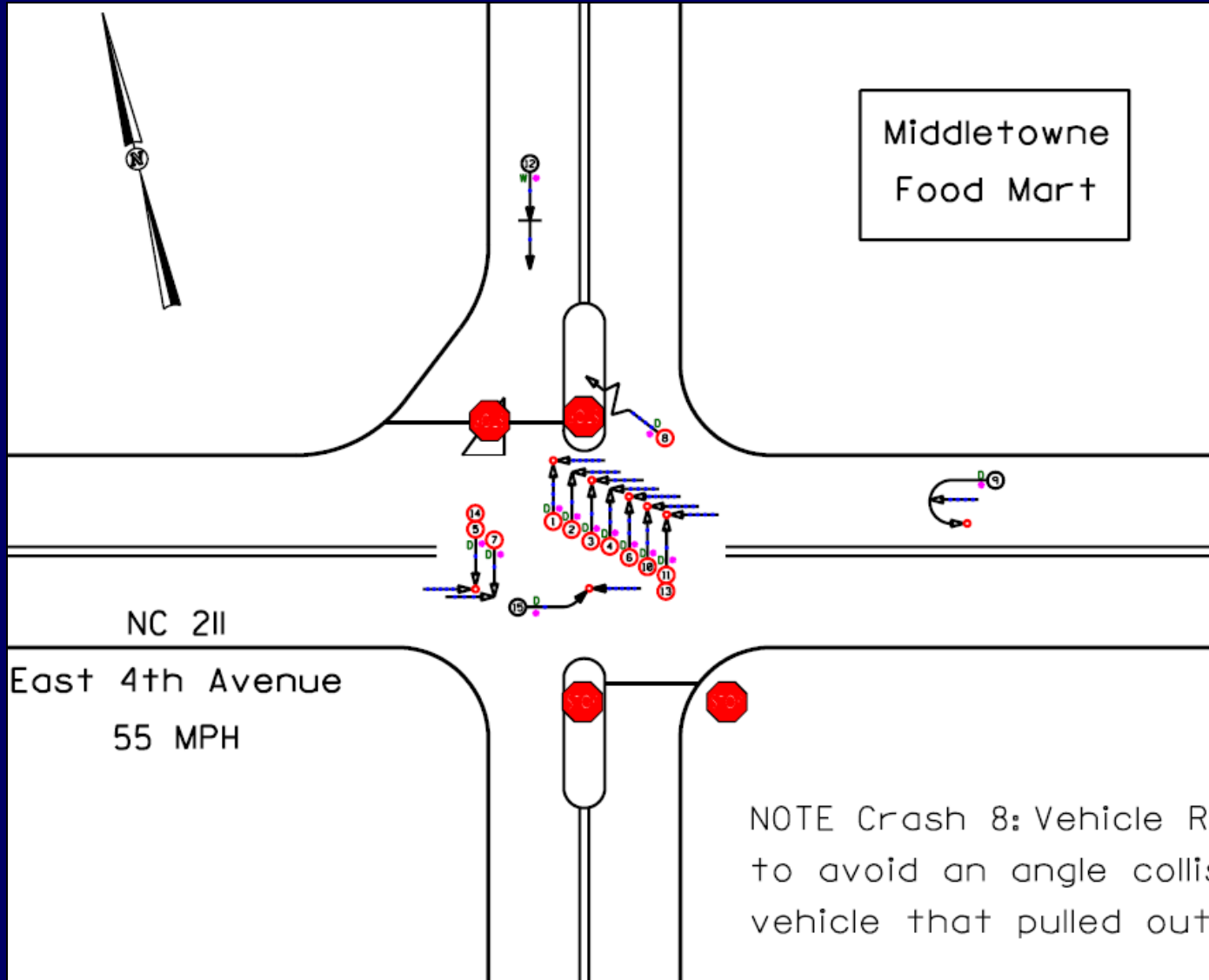
Category 3

- Site C -- Location Photos



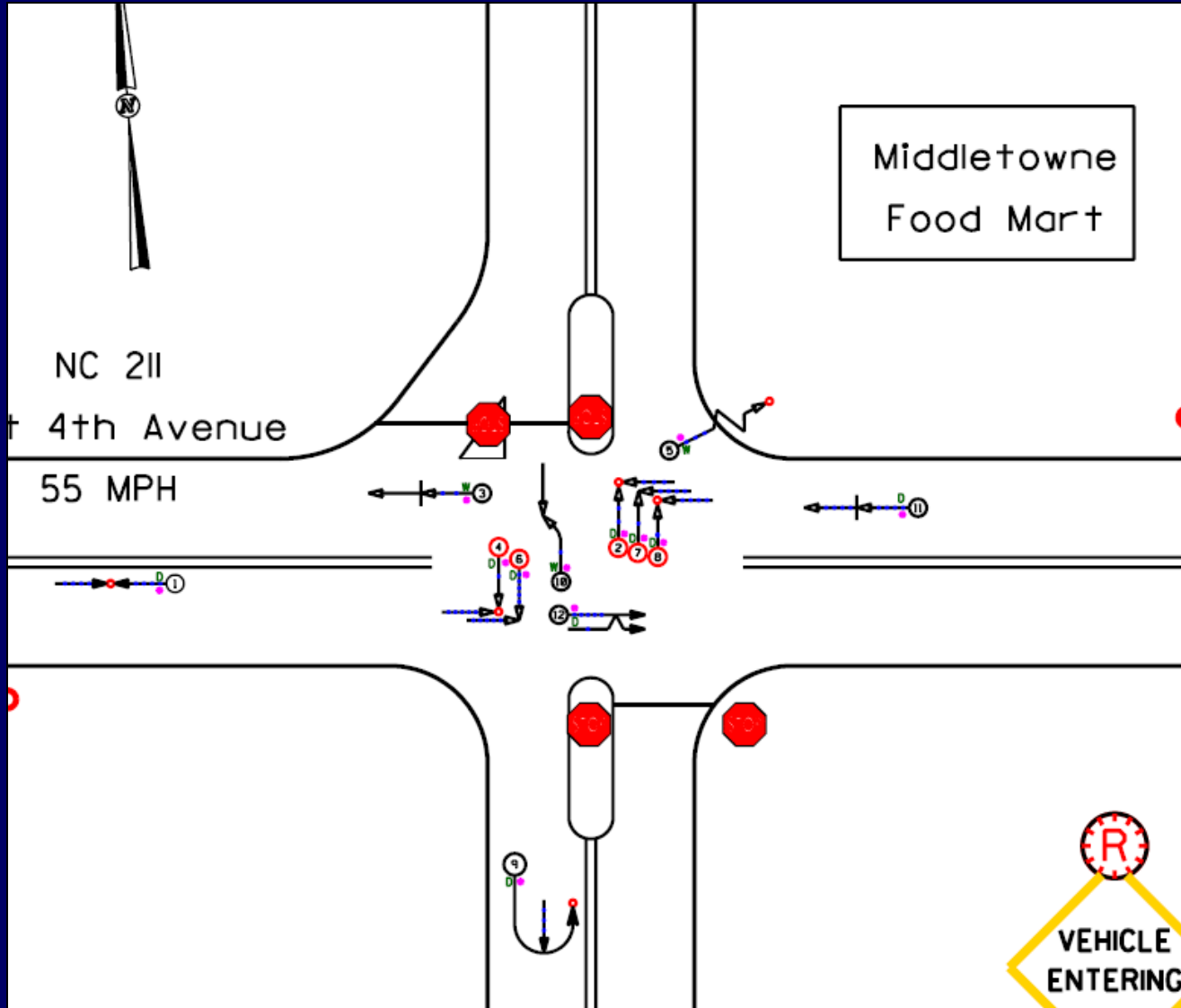
Category 3

- Site C -- Collision Diagram – Before Period (4 years)



Category 3

- Site C -- Collision Diagram – After Period (4 years)



North Carolina Evaluation

- Category 1

- Implemented from 1997 to 2003
- 5 Sites - 2-lane @ 2-lane
- 4 Sites - 4-lane @ 2-lane
- Implemented from 2004 to 2008
- 17 Sites Total

9 Sites
Simple B&A (-1.3%)
Simple B&A (+31.3%)
8 Additional Sites

- Category 2

- Implemented from 1997 to 2003
- 9 Sites - 2-lane @ 2-lane
- 2 Sites - 4-lane @ 2-lane
- Implemented from 2004 to 2008
- 15 Sites Total

11 Sites
Simple B&A (-7.3%)
Simple B&A (-7.3%)
4 Additional Sites

- Category 3

- Implemented from 1997 to 2003
- 4 Sites - 2-lane @ 2-lane
- 7 Sites - 4-lane @ 2-lane
- Implemented from 2004 to 2008
- 13 Sites Total

11 Sites
Simple B&A (-46.1%)
Simple B&A (-19.9%)
2 Additional Sites