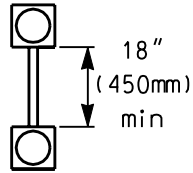


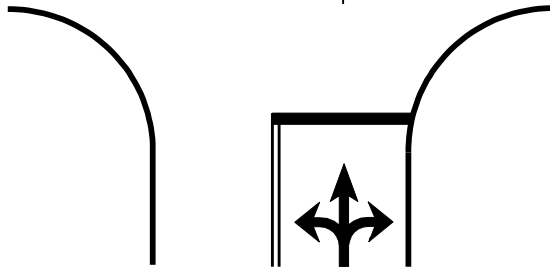


# Signal Head Approach Display and Alignment

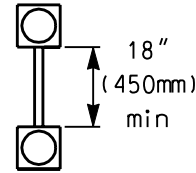
Single Lane Approach



Lane  
℄



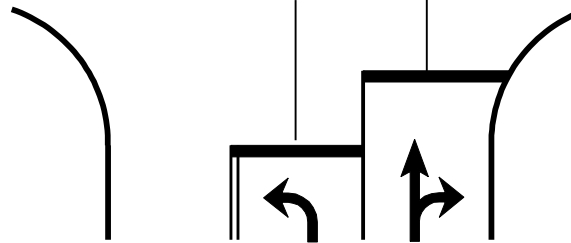
Single Lane Approach with Turning Bay



or \*



Lane ℄      Lane ℄

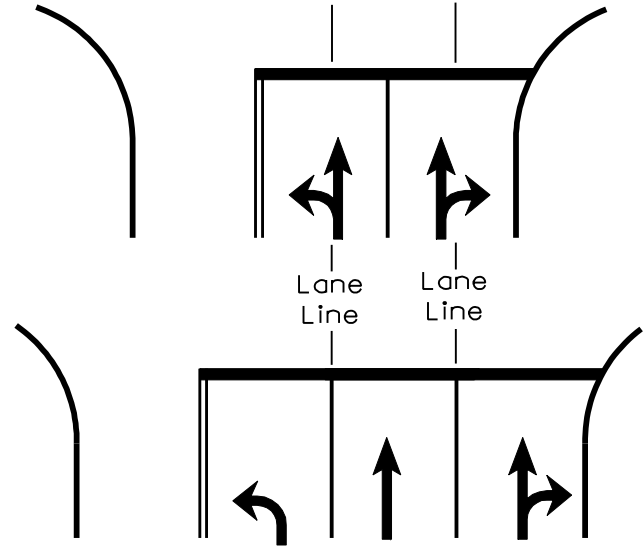


\* Engineer to determine based on site specific characteristics

Multilane Approach



Lane ℄      Lane ℄



## General Guidelines

- Flash vertically mounted heads alternatively

- Flash horizontally mounted heads concurrently

## Flashers

SIGNALS & GEOMETRICS SECTION  
TRAFFIC ENGINEERING AND SAFETY SYSTEMS BRANCH  
NORTH CAROLINA DEPARTMENT OF TRANSPORTATION

7-04

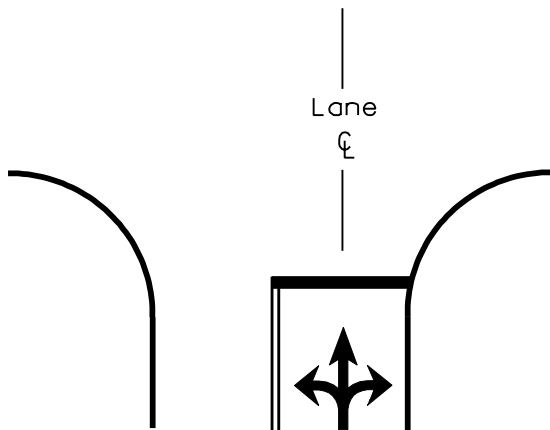
STD. NO.

7.0

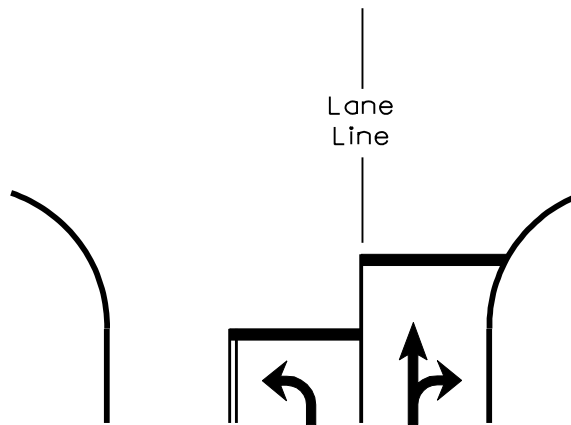
SHEET 2 OF 5

# Actuated Flasher with Overhead Sign

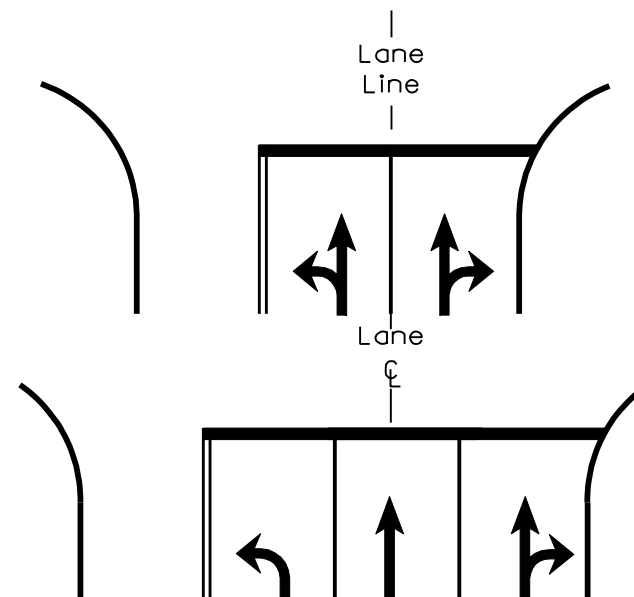
Single Lane Approach



Single Lane Approach with Turning Bay



Multilane Approaches



## General Guidelines

-Sign may be installed at intersection or in advance of intersection, at engineer's discretion

-Typical sign size: 114"x36"

-Lettering size: 8"D

-See drawing notes (Std. No. 5.0) for notes specific to actuated flashers

## Flashers

SIGNALS & GEOMETRICS SECTION  
 TRAFFIC ENGINEERING AND SAFETY SYSTEMS BRANCH  
 NORTH CAROLINA DEPARTMENT OF TRANSPORTATION

7-04

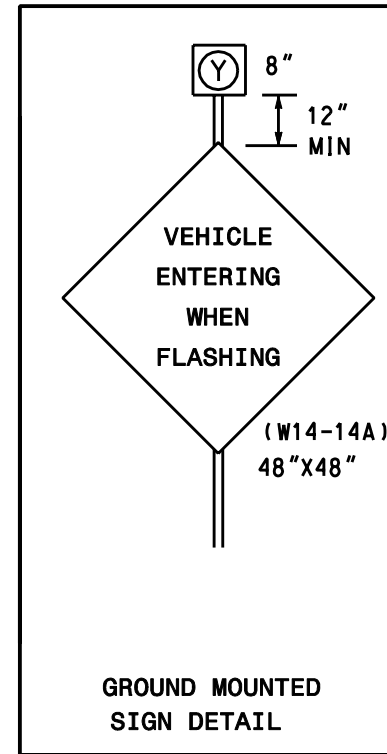
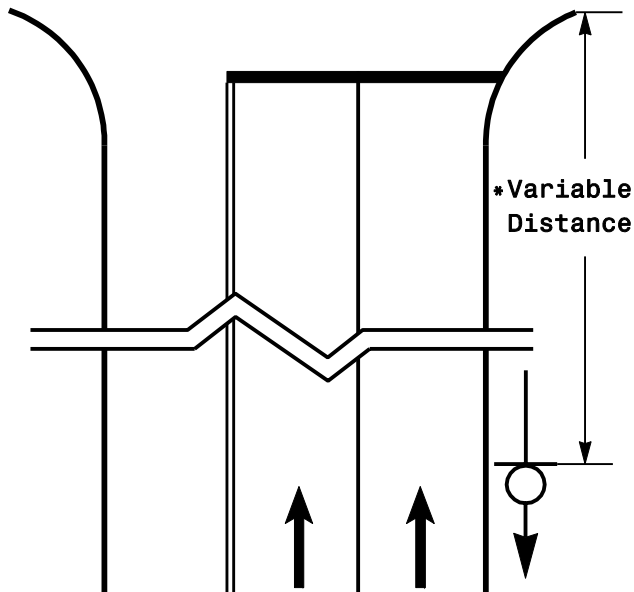
STD. NO.

7.0

SHEET 3 OF 5

# Actuated Flasher with Ground-Mounted Sign

Single or Multi Lane Approaches



## General Guidelines

- For multilane divided roadways with medians dual ground mounted signs may be installed

- See drawing notes (Std. No. 5.0) for notes specific to actuated flashers  
\* Refer to MUTCD Table 2C-4 for advance placement of signs

## Flashers

SIGNALS & GEOMETRICS SECTION  
TRAFFIC ENGINEERING AND SAFETY SYSTEMS BRANCH  
NORTH CAROLINA DEPARTMENT OF TRANSPORTATION

7-04

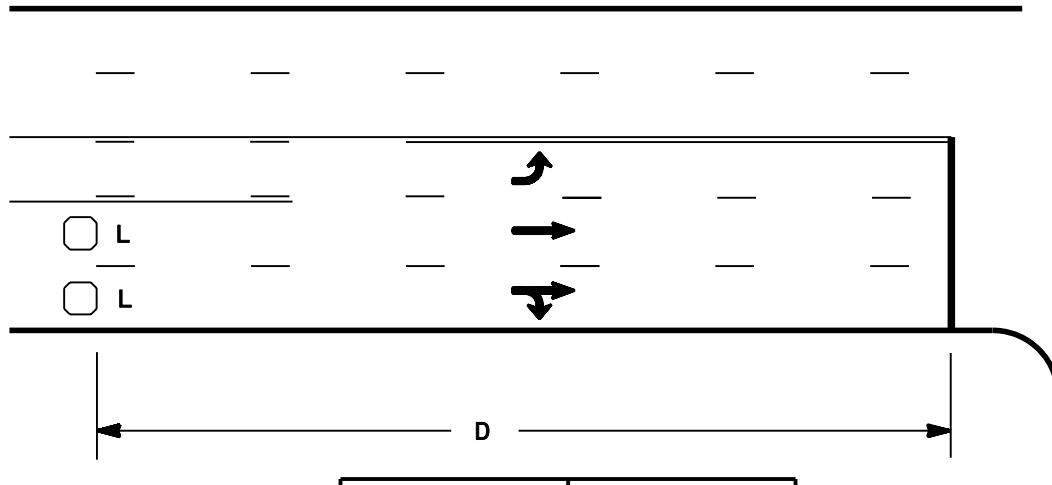
STD. NO.

7.0

SHEET 4 OF 5

# Loop Placement for Actuated Flashers

**Main Street Loop Placement  
(Single or Multilane)**



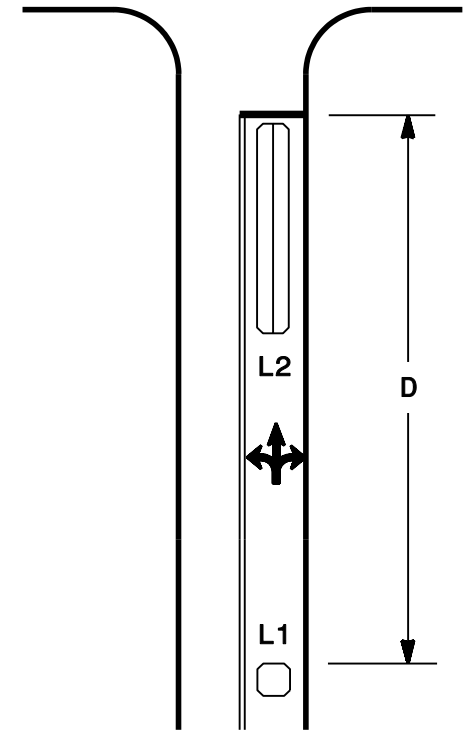
Design Speed mph (km/hr)	D	
	ft	(m)
40 (64)	250	(75)
45 (72)	300	(90)
50 (80)	355	(110)
55 (88)	420	(130)

L = 6ft X 6ft (1.8m X 1.8m), Presence loop

L1 = 6ft X 6ft (1.8m X 1.8m), Presence loop (Loop L1 is optional)

L2 = 6ft X 40ft To 60ft (1.8m X 12.0) Quadruple loop

**Side Street Loop Placement**



## Flashers

SIGNALS & GEOMETRICS SECTION  
TRAFFIC ENGINEERING AND SAFETY SYSTEMS BRANCH  
NORTH CAROLINA DEPARTMENT OF TRANSPORTATION

STD. NO.

**7.0**

SHEET 5 OF 5

**11-06**